



# IP Scan Tool Instructions

**Version:** <1.0>

**Release Date:** <2020-9-4>



# Content

---

<b>Content</b> .....	<b>2</b>
<b>1 Revise History</b> .....	<b>3</b>
<b>2 Introduction</b> .....	<b>4</b>
2.1 Overview .....	4
2.2 Applicable Model .....	4
2.3 Target Audience .....	4
<b>3 Instructions for use</b> .....	<b>5</b>
3.1 Scan .....	5
3.2 Change Parameter .....	5
3.3 Set Language .....	6

# 1 Revise History

---

Revise History:

Version	Author	Release Time	Description
1.0		2020.9.4	Initial Version

## **2 Introduction**

---

### **2.1 Overview**

Products without screens are not very convenient to deploy and use. Fanvil IP scanning tool is convenient to obtain device information and modify network parameters.

This document mainly introduces the use of IP scanning tools.

### **2.2 Applicable Model**

This document applies to Fanvil i12, i16V, i18S, i20S, i23S, i30, i31S, i32V, i33V/i33VF, PA2, etc.

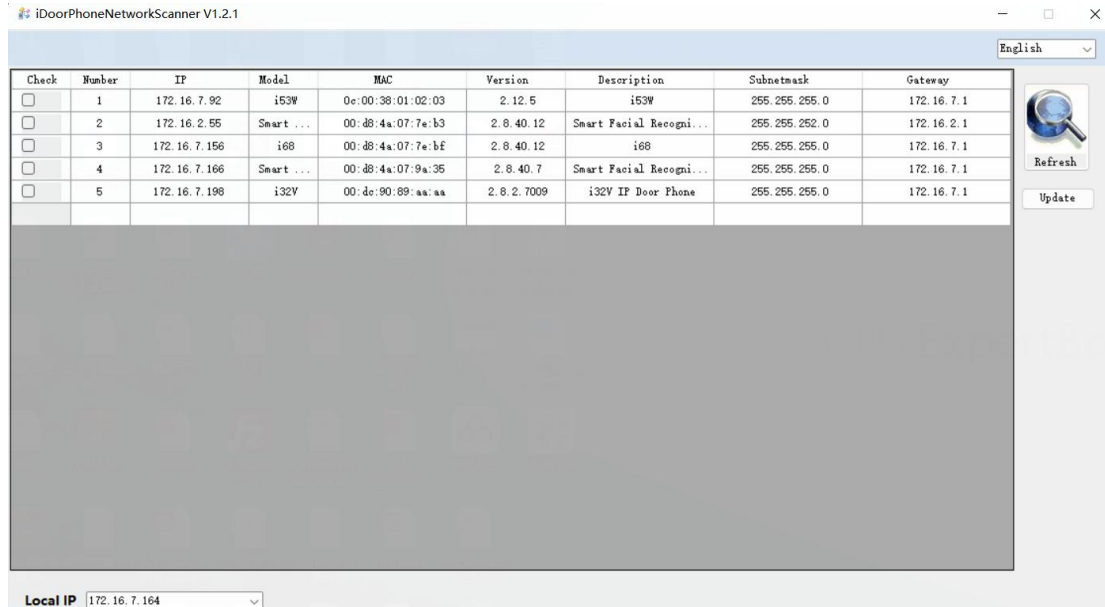
### **2.3 Target Audience**

This document is for people using IP scanning tools.

## 3 Instructions for use

### 3.1 Scan

Open the scan tool and click the scan button on the right to scan the azimuth devices in the local area network.

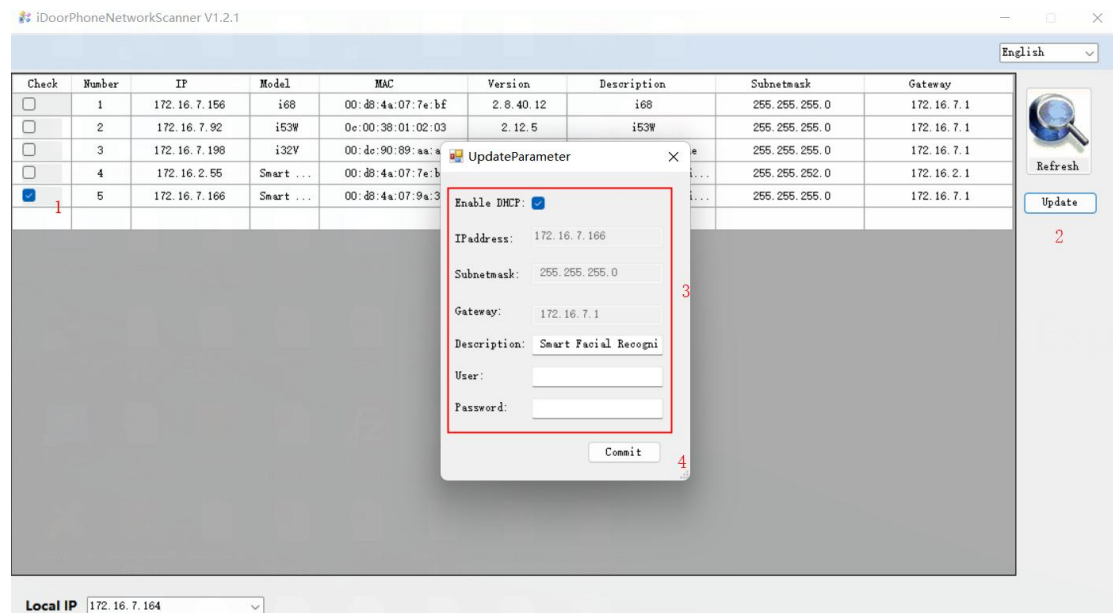


### 3.2 Change Parameter

IP scanning tool supports modifying device IP address and device description information

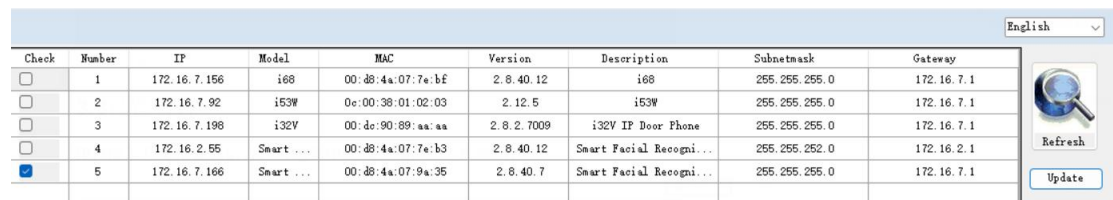
- 1) Select the device to be modified
- 2) Click the Modify Parameters button on the right
- 3) You can see the information as shown in the figure below. If the device uses DHCP, DHCP is checked, and the IP address cannot be modified at this time; when the DHCP check is removed, the device network can be modified to a static IP. Support modifying IP address, subnet mask, gateway; after setting the information to be modified, you need to enter the user name and password of the device (administrator user name and password)
- 4) After the modification is completed, click Submit, wait for the prompt to modify the

parameters successfully, and you can see the setting information in the scan list.



### 3.3 Set Language

The IP scanning tool supports setting the language, you can choose Chinese or English, as shown in the following figure:



It takes effect immediately after setting.